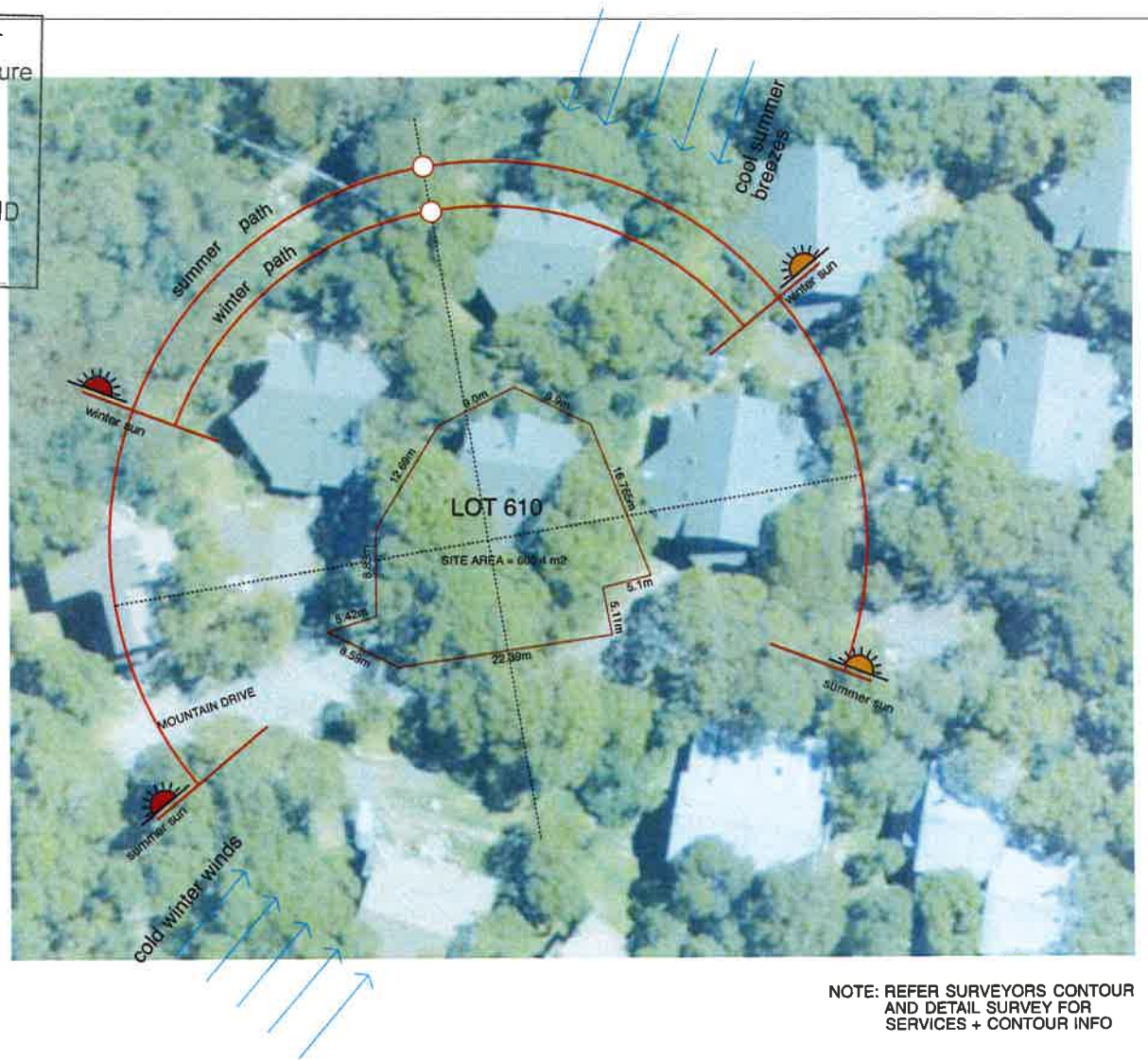


01 LOCATION PLAN  
 SCALE N.T.S REF



NOTE: REFER SURVEYORS CONTOUR AND DETAIL SURVEY FOR SERVICES + CONTOUR INFO

DRAWING LIST:

- A0.01 : LOCATION + SITE ANALYSIS PLAN
- A0.02 : PROPOSED GF + RF PLAN
- A1.01 : ELEVATIONS E,W,S + SECTION

DEVELOPMENT DATA:

SITE AREA : 605.4m<sup>2</sup>  
 EXISTING SITE COVER : 120m<sup>2</sup> (19.8%)  
 PROPOSED SITE COVER: 156m<sup>2</sup> (25.7%)

Rev	Status	Date	Rev	Status	Date
A	FOR DA	09.12.15			

**LEGEND:**

AFW: ALUM. FRAMED WINDOW	T: TIMBER
SHFAC: BLURHEAD	TB: HARDWOOD TIMBER BOARDS
CT: CERAMIC TILE	RW: RYLOCK WINDOWS, ALLUM. EXT/TIMBER INTERNAL, DOUBLE GLAZED; BLACK PIGMENT
CP: CARPET	
CW: COLORBOND CORRUG. MONUMENT	
CP: CORRUGATED GALV. IRON	
DP: DOWNPIPE	
HW: HOT WATER UNIT	
PC: POLISHED CONCRETE	

**Myson + Berkery Architects**

7 Merimbula St.  
 Gurrang NSW 2540  
 T(02) 4448 3710  
 F(02) 4448 3745  
 mba@mysonberkery.com.au

NSW Board of Architects  
 Registration #6643

24 MOUNTAIN DRIVE  
 LOT 610, WOODRIDGE,  
 THREDBO

Client:  
 C+G. SWEENEY

LOCATION AND  
 SITE ANALYSIS PLAN

Scale to AS  
 1: 500  
 Job Number  
 15 15

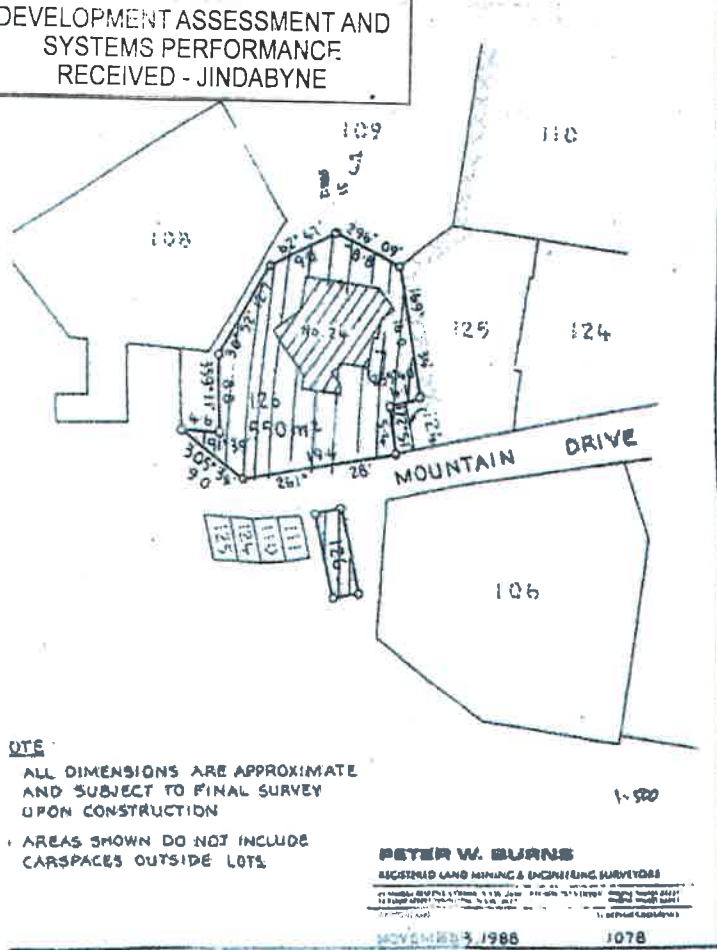
Date  
 DECEMBER 15  
 Drawn No.  
 A0-01  
 Revision  
 A

This drawing is copyright and may not be used without written consent. Do not scale off this drawing. Use figured dimensions only. Verify all dimensions on site.

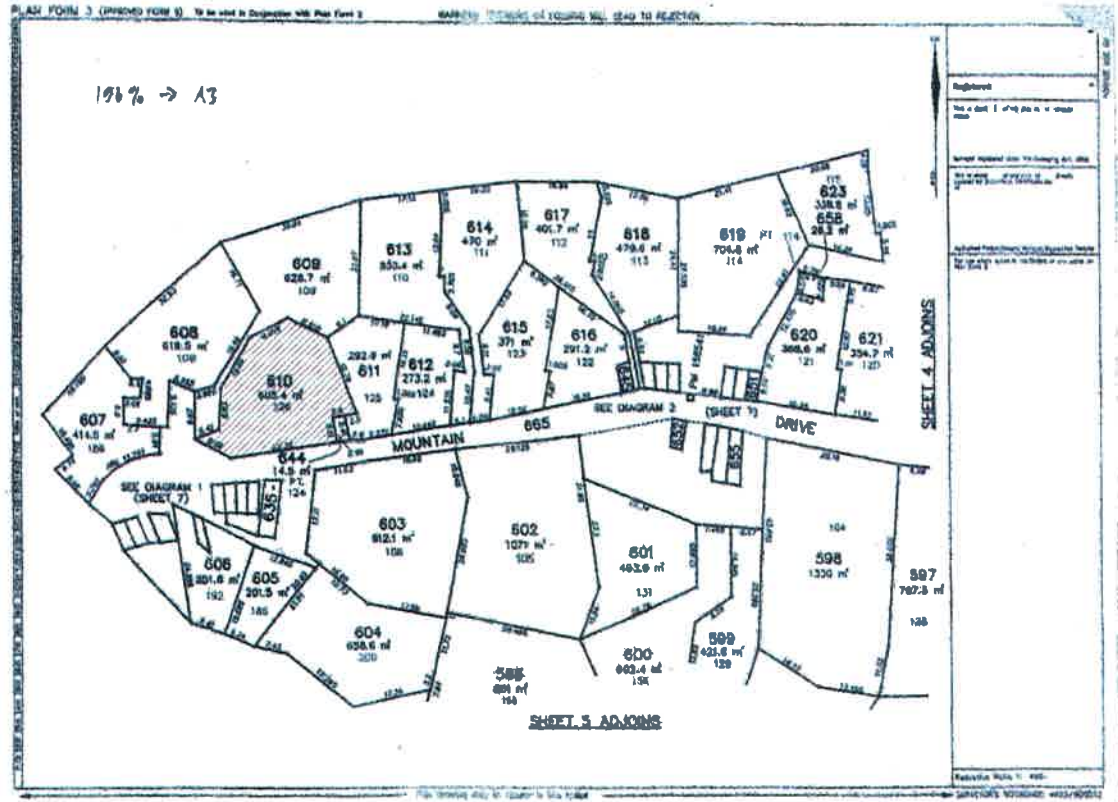


10 DEC 2015

DEVELOPMENT ASSESSMENT AND  
SYSTEMS PERFORMANCE  
RECEIVED - JINDABAYNE



NOTE: LOT 126 CONVERTED TO LOT 610 (TORRENS CONVERSION)



Rev	Status	Date	Rev	Status	Date
A	FOR DA	09/12/15			

**LEGEND:**

AFW ALUM. FRAMED WINDOW	T TIMBER
BHEAD BULKHEAD	TD HARDWOOD TIMBER BOARDS
CT CERAMIC TILE	RW RYLOCK WINDOWS ALLUM.
CPT CARPET	EXTIMBER INTERNAL
CW1 CORRUGATED CORRUG. MONUMENT	DOUBLE GLAZED, BLACK PICOAT
CW2 CORRUGATED GALV. IRON	
DP DOWNPIPE	
HWU HOT WATER UNIT	
PC POLISHED CONCRETE	

**Myson + Berkery Architects**

7 Merimbula St  
Curling NSW 2540  
T(02) 4448 3710  
F(02) 4448 3745  
mbs@mysonberkery.com.au

NSW Board of Architects  
Registration #1543

24 MOUNTAIN DRIVE  
LOT 610, WOODRIDGE,  
THREDBO

Client:  
C+G. SWEENEY



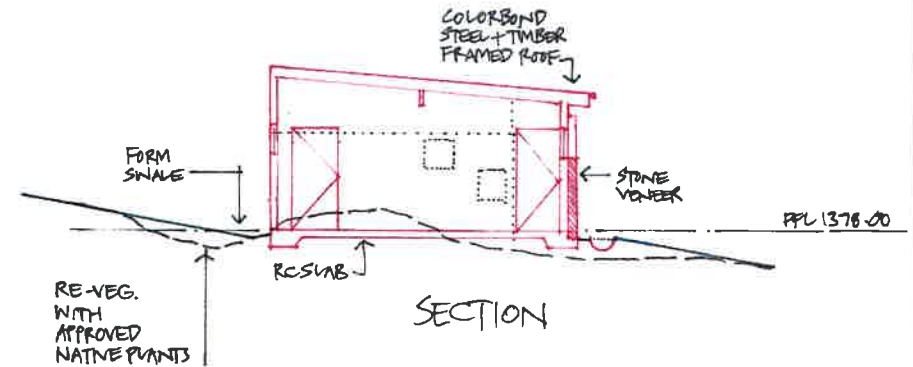
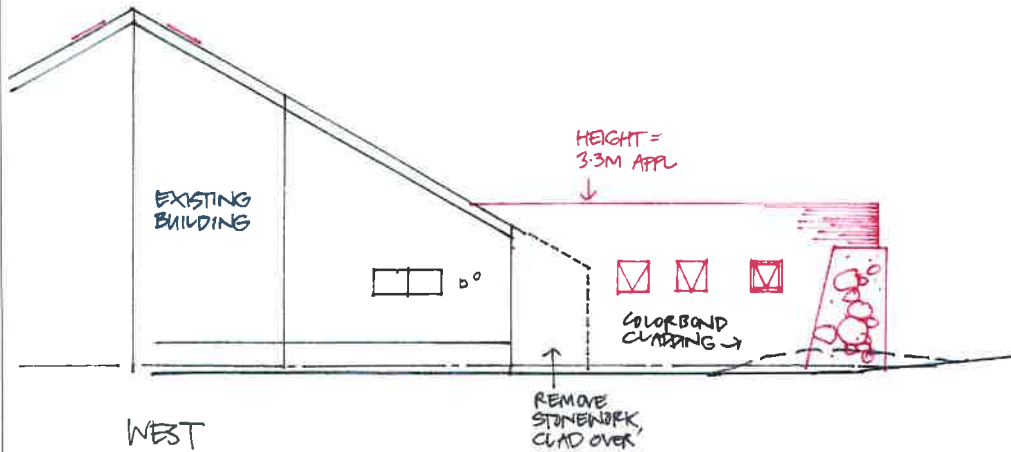
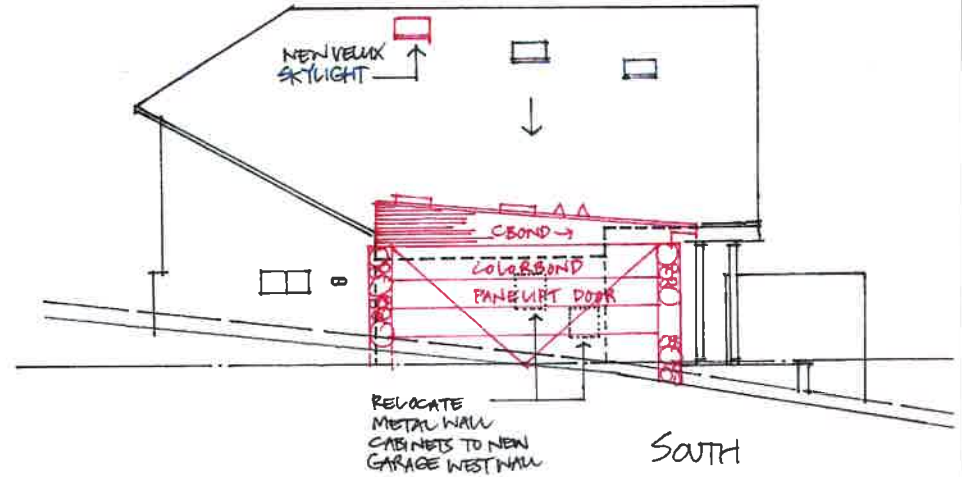
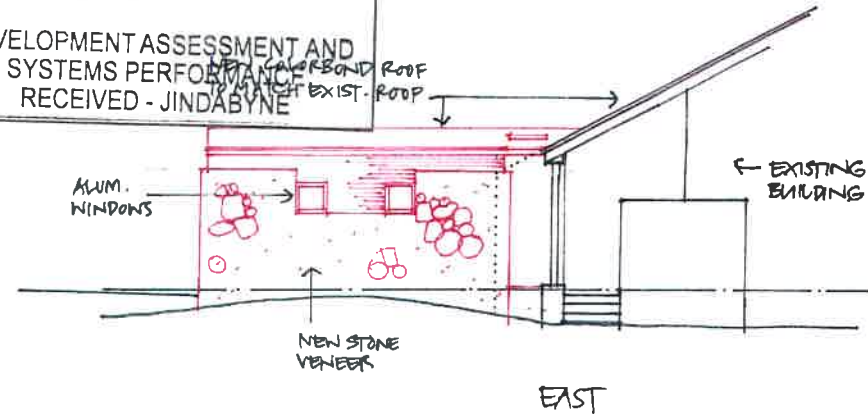
DEVELOPMENT		
LEASE SURVEY PLAN		
Scale in A3	Date	
N.T.S	DECEMBER 15	
Job Number	Draw. No.	Revision
15 15	A0-02	A

This drawing is copyright and may not be used without written consent. Do not scale off this drawing. Use figures wherever applicable. Verify all dimensions on site.



10 DEC 2015

DEVELOPMENT ASSESSMENT AND  
SYSTEMS PERFORMANCE  
RECEIVED - JINDABYNE



LEGEND:

- AFW: ALUM. FRAMED WINDOW
- BHEAD: BULKHEAD
- CT: CERAMIC TILE
- CPT: CARPET
- CWR: COLORBOND CORRUG. 'MONUMENT'
- CR: CORRUGATED GALV. IRON
- DP: DOWNPIPE
- HWU: HOT WATER UNIT
- PC: POLISHED CONCRETE
- T: TIMBER
- TR: HARDWOOD TIMBER BOARDS
- RYL: RYLOCK WINDOWS ALUM.
- ET: TIMBER INTERNAL
- DL: DOUBLE GLAZED: BLACK PVCOT

Myson + Berkery Architects

7 Merimbula St  
Currewing NSW 2540  
(02) 4448 3710  
(02) 4448 3745  
mbs@mysonberkery.com.au

NSW Board of Architects  
Registration #6543

24 MOUNTAIN DRIVE  
LOT 610, WOODRIDGE,  
THREDBO

Client  
C+G. SWEENEY

1:1000



ELEVATIONS E,W,S +  
SECTION

Scale # A1	Date
1: 100	DECEMBER 15
Job Number	Dwg No
15 15	A2-01
	Revision
	A